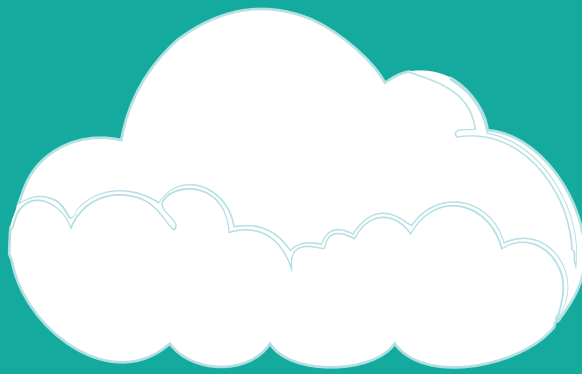


Panorama

AHEAD CONFERENCE 2024



Welcome!

Thank you for registering for the AHEAD Conference 2024. This attendee information pack contains information on the hybrid format, programme times, catering, and a conference centre map.

If you have any remaining questions please contact events@ahead.ie.

What can the online audience see and hear?

In most cases the online audience will see a live-stream of what's happening in-person. AV technicians will be controlling the cameras so there will be a mix of shots streamed to the online audience. If in-person attendees ask questions, they will be streamed to the online audience who will be able to follow along.

What can the in-person audience see and hear?

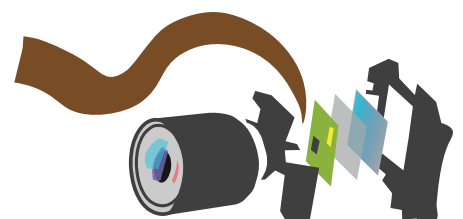
The in-person audience can see everything that's happening live but cannot see the online audience. Online presenters will be projected onto the big screens for the in-person audience to see and hear.

Lightning Sessions may feature either online or in-person speakers. These sessions will be fully available to both the in-person and online attendees and engagement with the session will be identical for both audiences. Lightning sessions will be recorded, captioned, and made available after the conference.

Workshop Sessions will be in-person only and all speakers will be presenting in-person. Please note that these sessions will not be recorded.

Online Workshops will be online only, and all speakers will be presenting online. These sessions will be recorded and made available after the conference once they have been captioned.

Main Sessions may feature both online and in-person speakers. These sessions will be fully available to both the in-person and online attendees and engagement with the session will be identical for both audiences. These sessions will be recorded, captioned, and made available after the conference.



Panoramic View: Widening the Lens for Systemic Inclusion in Tertiary Education

The rapidly growing diversity in our further education and training (FET) and higher education (HE) learner population has brought greater recognition of the need to ensure that 'inclusion is everyone's business'. A growing number of students with disabilities, greater ethnic and socio-economic diversity, and rising numbers of second language learners amongst, have further highlighted the complex and intersecting identities within our institutions. All staff have a part to play in ensuring we create programmes, services and environments which enable them to access, participate and flourish in all aspects of the educational experience.

In an Irish context, important goals concerning disability inclusion and universal design are embedded in national FET and HE strategy, and evidence exists of significant engagement in professional development, (forthcoming, Healy et al.).

But the same research highlights a lack of strategic focus on universal design at the institutional level, and challenges to creating implementation structures which support its sustainable application.

This conference explores strategies and structures which sustainably embed universal design and disability-inclusive approaches in institutional policy and practice, embracing the ever-complex identities of all learners. The aim is to take a panoramic view of our institutional approaches to inclusion and create a space for reflection, networking and the broadening of our horizons.



Drawing on the literature, we'll be focussing on ideas and actions in four key pillars of our institutions, and how they interact and intertwine to create a more inclusive environment for our students:

- Learning, Teaching and Assessment
- Supports, Services & Social Engagement
- Physical Environment
- Digital Environment

Notably, this conference marks the release of the ALTITUDE Charter, kickstarting a national conversation about how we can strategically embed a UD approach in our institutions.

Catering

During the conference, there will be catering and refreshments available at the below times:

Day 1:

09:00 - 09:30

11:15 - 11:40

13:35 - 14:35 (Lunch)

15:35 - 15:55

Day 2:

09:00 - 09:30

11:30 - 11:55

13:00 - 14:00 (Lunch)

Programme

Registration is available from 9am each day. The programme will begin at 09:30am each day.

Wednesday, 20th March 2024

09:30 Welcome and Introduction

- Launch of AHEAD Strategic Plan 2024-28.
- Video address from Minister Simon Harris, opening the conference and marking the launch of the ALTITUDE Charter.

10:00 Lightning Sessions:

1. My Voice, My Choice.
2. Integrating UDL Principles into Module Design and Assessment Strategies.
3. How do students with disabilities experience online education: A Systematic Review.
4. Embedding Universal Design for Learning in Higher Education: Lessons to Date.
5. Harnessing AI for inclusive education and employment: new possibilities for physical, cognitive, and communication access.

10:45 **Main Session:** Challenges to Strategically Embedding a UD Approach

11:15 Break

11:40 **Main Session:** Starting a National Conversation on Embedding Universal Design

- Introducing the ALTITUDE project – The National Charter for Universal Design in Tertiary Education.
- Leadership in Universal Design in Tertiary Education - a new module for leaders.
- Developing a Web Accessibility Statement for the Tertiary Sector.
- Tertiary Leaders Panel - the challenges and opportunities of implementing the ALTITUDE Charter.

13:35 Lunch

14:35 Choose your own adventure:

- Davin Suite: Getting Everyone Onboard: Student Engagement and Faculty Partnerships
- Nally Suite: Beyond Curiosity: Building on Initial Professional Development Opportunities to Develop Scope and Breadth of UDL Initiatives

15:35 Break

15:55 Choose your own Adventure:

- Davin Suite: Institutional Journeys to Embedding UD: Case Studies
- Nally Suite: Changing Landscapes - applying the learnings

17:00 Conference Close

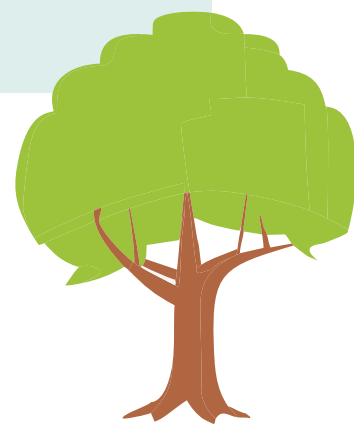
Thursday, 21st March 2024

09:30 Welcome and Introduction

- Introducing LaunchPAD - a new partnership between AHEAD and the National Disabled Postgraduate Advisory Committee (NDPAC)

10:00 Lightning Sessions:

1. Resolving the tension between presumed-to-be rigid programmes and UDL: A health professions case study
2. International mobility is for everyone: supporting students with disabilities to study or work abroad
3. Whole institution approach to students' diversity and inclusion in European universities: A SWOT Analysis
4. Designing a Course Template for a Large Institution
5. Increasing awareness to embed inclusion: The Universal Design in Education Project



10:45 **Main Session:** Exploring Generative AI Together: How can Artificial Intelligence contribute to Student Support?

11:30 Break

11:55 **Main Session:** Starting a National Conversation on Embedding Universal Design in Tertiary Education

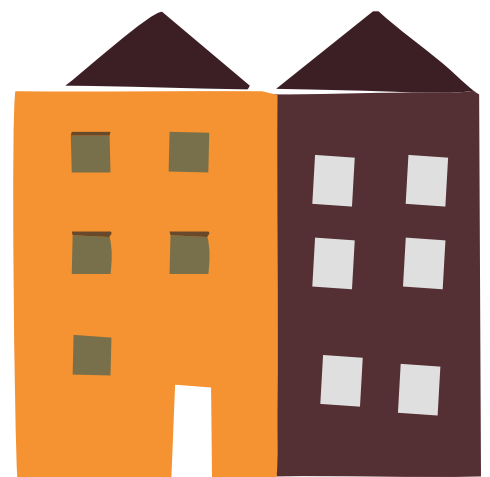
- The Toolkit for Inclusive Tertiary Education.
- Student Perspectives on Universal Design - Diverse Student Panel Discussion.

13:00 Lunch

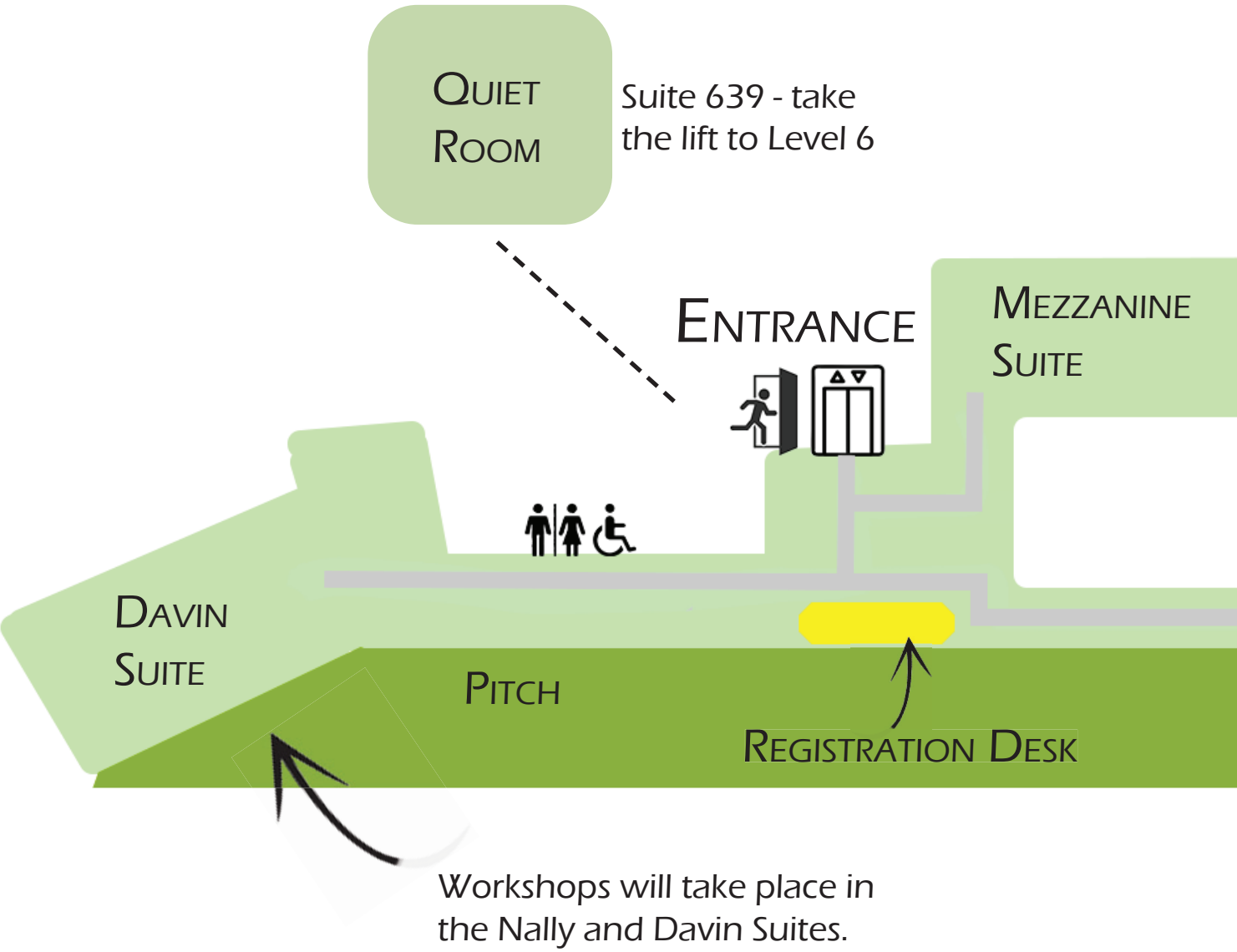
14:00 Choose your own adventure:

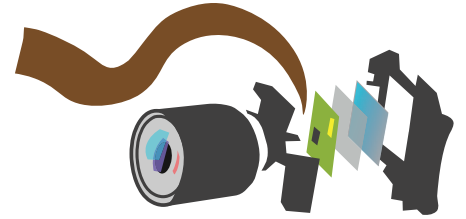
- Davin Suite: Mini Hackathon - Meeting the Challenges of Embedding Universal Design for Learning in Practice
- Nally Suite: Beyond the Classroom: Social Engagement, Transition to Work, and More

15:00 Conference Close



FLOORPLAN





Main Sessions and
Lightning Sessions take
place in the Mezzanine
Suite



MEZZANINE
SUITE

Exhibition and Catering
take place in the Foyer



FOYER



NALLY
SUITE

PITCH

PITCH



Workshops will take place in
the Nally and Davin Suites.

Published by AHEAD 2024 for the AHEAD Conference: Panorama





ahead